



## RAILWAY

## STRANDS FOR MIDDLE POINT ANCHOR

A specific range for anchoring of the Middle Point.

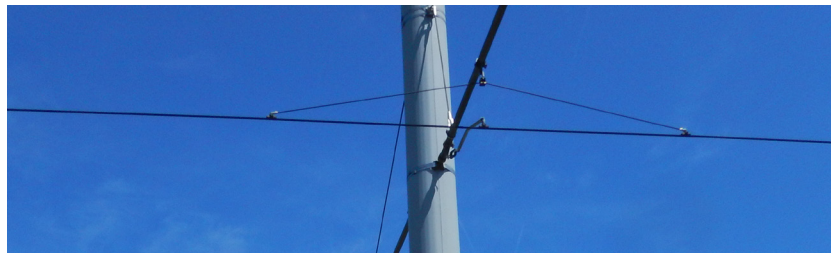
### TECHNICAL FEATURES OF THE MATERIALS

#### GALVANIZED STEEL STRANDS

Characteristics	Value
Diameters	from 9,00 to 10,50 mm
Tensile strength	>135 daN/mm <sup>2</sup>
Class and mass of coating	A > 230 g/m <sup>2</sup>
Heavy zinc coating	> 549 g/m <sup>2</sup>
Theoretical unit weight	from 396 to 733 kg/km
MBL	from 5685 to 14450 daN
Grease (when required)	type A
Theoretical electric resistance at 20°C	from 1,705 to 2,416 Ohm/km
Standards	CEI 7-2, ASTM, BC, NFA 91-131
Certifications	RFI, SNCF, ONCF

The material is strictly controlled during every stage of manufacturing according to our Quality System in compliance with **EN ISO 9001:2008**

### CONSTRUCTIONS



### PACKAGING

#### STANDARD

- Wooden reels from 1000 to 4000 m



#### SEAWORTHY PACKING

- Treated and fumigated wooden reels FAO ISPM 15

